

Vol. 11

Issue 7

OFFICIAL PROGRAMME



FOOTBALL LEAGUE DIVISION THREE  
SATURDAY, OCTOBER 16th, 1976

Kick-off 3.00 p.m.

# SWINDON TOWN



15p



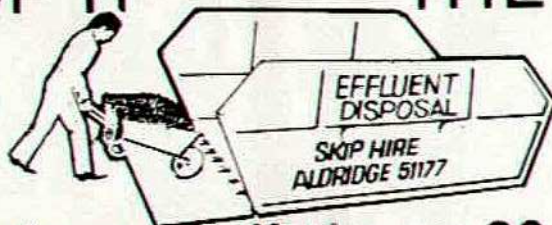


Alun Evans rushes in for any loose ball, following a Walsall attack during the game against Port Vale.

# RUBBISH!

GET RID OF IT — THE EASY WAY

For  
GARDENERS  
D.I.Y.  
BUILDERS



EASY LOAD  
DROP DOOR  
SKIPS

**HIRE A SKIP** from as little as £8.50 inc. V.A.T.

**EFFLUENT DISPOSAL**

Phone JULIE or KEVIN on ALDRIDGE 51177 or 56822  
FOR A FAST SERVICE AT THE RIGHT PRICE



# SIDE~LINES



What a day. It rained throughout the day, the wind blew hard from the sea and the night was the most miserable I can ever remember. Yes, those are my memories of Brighton. This normally picturesque seaside town suddenly turned into a manager's nightmare. The 7-0 defeat we suffered at the hands of Alan Mullery's men still haunts me.

Never in my wildest dreams did I ever think that any team in the league would ever give us such a thrashing. To have seven goals put past us in ninety minutes would be bad enough, but when you consider that all the goals came in the final forty-five it really does take some believing. It was total disintegration. I couldn't believe that we were the same team in the second half. In the first half we had given Brighton all sorts of problems and with a bit of luck we could have been a goal up with Alan Buckley just failing by a hair's breadth to connect with a ball knocked down by Bernie Wright. Our small band of supporters must have been thinking that the long tiring journey was all going to be worthwhile and that the return to the Midlands would fly past with recollections of how we outplayed the high scoring seasiders.

The second half commenced where the first half had left off with the lads giving Brighton plenty to think about. Alan Buckley had a great shot saved by the goalkeeper, which looked a goal all the

way. At that time I was confident we were going to gain the result. Everyone at home must have looked at the result and thought what a terrible game we must have played, and you would be right about forty-five minutes of the game but the first half display showed that the ability is in the side, but a game lasts ninety minutes and we must show this ability throughout that time. We had just four days to put all this behind us and prepare ourselves for our next objective the visit to Fratton Park. I felt that overall we deserved both points but an unfortunate penalty decision four minutes from time gave Pompey a lucky point. Their goalkeeper pulled off many fantastic saves and when Alan Buckley and Alun Evans did manage to beat him their shots were cleared off the line. Normally when a team is doing well, shots of that calibre go in, but that was not to happen on this occasion. However we looked a lot more confident on Saturday but we are still not at our best.

DOUG FRASER

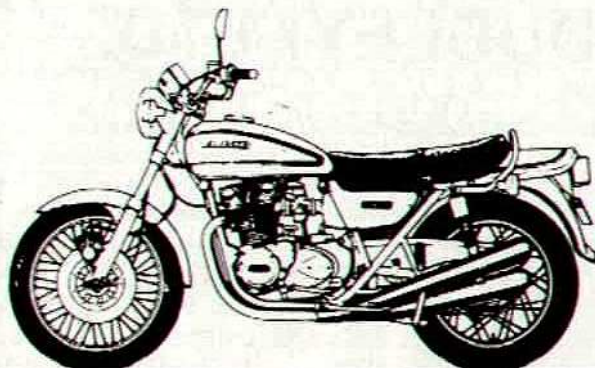
## KUSTOM KAWASAKI

### THE FIRST EASY-RIDING 750 cc VERTICAL TWIN

750cc vertical twin, twin cams, twin carbs, dynamic balancers, anti-pollution system, electric starter, 5-speeds, front and rear disc brakes.

#### KUSTOM KAWASAKI

CANNOCK ROAD, HEDNESFORD,  
Nr. CANNOCK WS12 4AE.  
STAFFS. (Phone HED. 36617)  
*We are just off A5 and M6*





# COLIN FARREN HOLDINGS LIMITED

FARREN, CASSELLS  
& WESTLEY LTD.



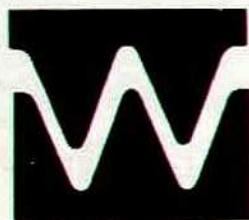
*Manufacturers  
of*  
**SILVER PLATED  
GIFTWARE**

Tel. DUDLEY 213192

**MACHINE FABRICATION  
GENERAL MACHINING  
MACHINE BUILDING**  
Tel. DUDLEY 57729

**ikon**

Tel. WALSALL 27826



**Willenhall  
Pressure  
Diecasting  
Co. Ltd.**

**PRESSURE DIECASTING IN ZINC  
BASED ALLOYS BS 1004A**

**ZOAR DIE TOOLS  
(DUDLEY) LTD.**

**PRESSURE DIE & PLASTIC MOULD MAKERS**  
Tel. DUDLEY 56476



*Registered Offices:*

SEBA PRODUCTS

IKON ENG. CO. LTD.

ZOAR DIE TOOLS

WILLENHALL PRESSURE DIECASTING CO. LTD., STREET,

MUSK LANE TRADING ESTATE

LOWER GORNAL, DUDLEY,

WEST MIDLANDS DY3 2UH.

22 SHAW STREET WALSALL WS2 8PH

Back row, L. to R.—  
Trollope, Thompson, Rogers,  
Stroud.

Middle row, L. to R.—  
Allen, Goddard, Prophet,  
Aizlewood, Gilligan, Burrows,  
Barron.

Front row, L. to R.—  
Chalklin, Dixon, Moss, Syrett,  
McLaughlin, O'Brien,  
Anderson.

Swindon Town, like Walsall, fought off the threat of relegation last season to become one of the favourites to regain Second Division status this time.

And they have made a considerably better start to the new campaign than the Saddlers, currently lying eighth in the table just a couple of points behind leaders Brighton.

The Wiltshire club, managed by former Rotherham player, Danny Williams, are unbeaten at home—they did have a lucky 1—0 success against Shrewsbury, though, last Saturday—but have not really been achieving any sort of consistency on their travels.

**Swi**





Goalkeeper Allan has been holding his place in the side on merit after being recalled to take over from the injured Jim Barron at the beginning of the season, while the full backs on view today are almost certain to be ex-Crystal Palace man Tony Taylor and John McLaughlin, 'who moved to Swindon from Colchester on a free transfer some years ago.

Swindon normally play with twin centre backs, skipper Colin Prophet and Steve Aizlewood. Prophet, who scored the goals to beat Shrewsbury last weekend, was formerly an amateur with Crewe who had spells with Sheffield Wednesday and Norwich before joining the club for £25,000 after a month on loan.

Aizlewood, a player Walsall expressed interest in when he was at Newport County, was one of manager Williams' transfer deadline deals last March. However, Aizlewood, who cost £12,000, has been out of the side injured and club coach Frank Burrows, at 32 one of the veterans on the Swindon staff, could still be deputising.

Another Swindon signing to help them in their fight against relegation last season was mid-field man Gerry O'Brien, who cost £15,000 when bought from Southampton. He is part-

nered in mid-field by Kenny Stroud and the club's latest capture, former Halifax skipper Ray McHale.

McHale, who struck 15 goals for Halifax last season, had been wanted by Swindon for 18 months and Manager Williams finally secured his services six weeks ago, in exchange for an £8,000 cheque.

In the striking department David Moss, the club's joint top scorer, is keeping out one of Swindon's best known players, Don Rogers, who is now in his second spell with the club after periods with Palace and Queen's Park Rangers. Rogers played at the beginning of the season because Moss was injured but he is now back in the reserves.

Leading the Swindon attack this afternoon will be Dave Syrett. He was the club's second highest scorer with 14 league goals last season and so far this term he and Moss have notched four each.

Like Walsall, with Eire keeper Mick Kearns, Swindon also have a current international, last season's top scorer Trevor Anderson. Anderson was in the Northern Ireland team that played Holland in Rotterdam in a World Cup qualifier on Wednesday at the same time as Kearns was in Ankara on duty for the Republic of Ireland against Turkey.

(by TREVOR GEDGE of the Express & Star)

# Swindon Town



# CONTELEC SUPPLIES

ALMA STREET  
WILLENHALL WV13 1LG

TECHNICAL DISTRIBUTORS TO THE ELECTRICAL CONTROL INDUSTRY

TEMPATRON PROCESS TIMERS — SHEET STEEL ENCLOSURES  
TELEMECANIQUE CONTROL GEAR  
CURRENT TRANSFORMERS — BUS BAR INSULATORS  
CRIMPED CABLE CONNECTORS 0.5mm<sup>2</sup> to 120mm<sup>2</sup>  
DORMAN SMITH FUSES — INSULOID CABLE ACCESSORIES

Call CHRIS DIMBERLINE or DENNIS BIRD at 66556

## In Reserve

### F.A. YOUTH CUP

#### Walsall 1, Hednesford 2

After dominating the first half in which we had enough chances to have sewn the game up, our performance in the second half was, to put it mildly, pathetic. After going a goal behind, our work-rate should then have increased, what happened in fact was that their heads went down, and we never looked like getting back into the game. I hope that our lads have learnt a lesson from this game. In football success comes from eleven players, all working, and helping one another, plus the balanced use of flair. I stress balance because the continual use of a favourite trick takes away from its future effectiveness.

**Team:** Harper, Walstead, Hocknall, Newman, Secker, O'Connell, Heath, Crosling, Jordan, Richards, James.  
**Sub:** Blazas.

### Soccer Violence

With violence spreading now to non-league football, my personal feelings about this increasing menace at the matches would be to make a minimum fine of £100 and as 90% of the offenders are under 18 years of age, I would make the offenders pay half of the fine, the other half to be paid by the parents. The parents would then make certain that they know where their children are and what they are getting up to. After all they are responsible for them until they reach 18 years of age.

### Warley County Borough 0

#### Walsall 0

Scoring chances were down to a minimum in a game where both defences played tight and gave nothing away.

**Team:** O'Keefe, Heath, Britton, Clarke, Newman, Bates, Hunter, Crosling, Birch, Taylor, James.

TONY SENTER  
Chief Scout

**BROWNHILLS  
SHEET METAL  
AND  
ENGINEERING  
Co. LTD.**

(Member of the Stockflis  
(Manchester) Group)

*Manufacturers and Merchants of . . . .*

INDUSTRIAL WHEELBARROWS AND ALL PURPOSE  
BARROWS — GARDEN BARROWS — LIGHTING  
COLUMNS — FABRICATORS & TUBE MANIPULATORS

**CAMDEN STREET SHEET METAL WORKS  
WALSALL WOOD**

Telephone: BROWNHILL 6641





## BUTLER FOUNDRIES GROUP

*Expanding Companies with Vacancies for the right personnel.*

- ☐ ALUMINIUM ALLOY CASTINGS ☐ GREY IRON CASTINGS
- ☐ POWER PRESS AUTOMATION
- ☐ MACHINING, TOOLMAKING, PATTERN & DIE MAKING

Coppice Side Industrial Estate · Brownhills · Walsall WS8 7HD · England  
Telephone: Brownhills (05433) 2455 · Telex 339933

# MAGIC MOMENTS

Today's *Magic Moment* takes us way back in time to 1930, with a letter sent to us by Mr. Ernest J. Wilcox, 12a Kingswood Park, Holyhead Road, Albrighton.

Dear Sir,

One supposes that when one talks of men like Biddlestone, Houldey, Walters, Muldoon, Helliwell, Bull, Bradford, Mason, Rowe, A. V. Walters, Eyres and Barnes, one is going back a bit. But these players and a reserve named Johnson take me to the famous meeting with Villa in the Cup-tie of 1930. We had got through to the third round which then was called the 1st round proper. Our opponents were to be Villa at Walsall. At this time Villa were one of the "greats" with men like Olney, Smart, Mort, Gibson, Talbot, Tate, Beresford, Kingdon, Waring, Walker, Houghton. Obviously the little Walsall ground wasn't going to be adequate to house all who would want to see this match. So in their wisdom the directors of the day opted to take the tie to Villa.

All Walsall decided to go to this piece of history and in the heyday of the railways L.M.S. laid on a relay of trains to Witton. Once there, it was a case of walking ten abreast up the street to the ground. As one approached, the congestion developed enormously until it was impossible to walk in any other direction.

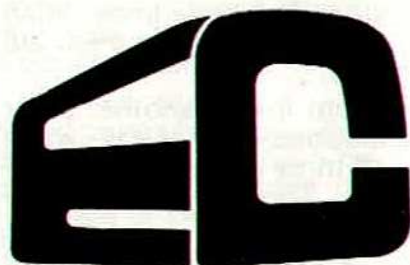
One man got in this current, turned into the ground, paid his shilling (that's what it was in those days) got through the turnstiles, did a U-turn out through the exits which were comparatively empty outside, waited till all the crowds got in and then proceeded home. 74,600 people attended, a then record from which Walsall's share of the gate was less than £2,000 and of course we lost 3-1. But what a day. The Arsenal game was good, too, and I remember some Arsenal supporters quoting that this (the ground) was like a chicken-run. I turned round and told them that **they** would be the chickens when Alsop and Co. had finished with them, to which they good naturedly laughed scornfully. But I was right.

Happy memories. I still watch every game at home and a few away but since I have come to live at Albrighton I suppose every home game is an away one for me.

Yours sincerely,  
Ernest J. Wilcox.

Thanks very much, Mr. Wilcox, for this letter and I'm sure many of our long serving supporters will share in your memories. It's wonderful to hear about the old times so let's have more of these tales of long ago. All letters should be sent to Magic Moments, Walsall Football Club, Hillary Street, Walsall.

## TOURS — U.K. & Europe



## FOOTBALL EXCURSIONS

## EVERTON COACHES LTD

Tel. 090 57 2525 CHAPEL BRIDGE DROITWICH · WORCS.



# PATRICK

## Made for Sport



### FOR TRAINING ▶

Choice of leather or nylon laminate uppers with or without toe reinforcement. Hard-wearing, non-slip soles.



### ◀ FOR FELL WALKING

All leather uppers and leather lined throughout. Tyroler moulded soles.



### FOR TENNIS, BADMINGTON, SQUASH

Soles specially designed to withstand rigours of the game. With leather or leather reinforced uppers.



### ◀ FOR SOCCER & RUGBY

In a wide variety of styles to suit individual preference. Superbly comfortable with uppers in leather.



from your local sports shop

FOR NAME OF YOUR NEAREST STOCKIST, PLEASE CONTACT

# PATRICK U.K. LIMITED

Grove Terrace, Walsall WS1 2NE  
Tel. Walsall 21322

## role call

WALSALL F.C.  
FELLOWS PARK  
WALSALL

Telephone:  
WALSALL 22791

CHAIRMAN  
K. E. Wheldon

DIRECTORS

J. A. Harris

R. Homden

S. E. Boler

B. E. Bradnack

SECRETARY

H. J. Westmancoat

TEAM MANAGER

Doug Fraser

ASSISTANT TEAM MANAGER

& COACH

Roger Hynd

CHIEF SCOUT

Tony Senter

PHYSIOTHERAPIST

R. G. Davies

COMMERCIAL MANAGER

George Cox

PROGRAMME

Compiled and Designed

Midland Promotions, Walsall

Editor

George Cox

Photographs

W. Pepper

Printers

W. J. Ray & Co. Ltd., Walsall

## Third

After the trauma of their 7-0 hiding at Brighton, Walsall had a great chance to come bouncing back to winning ways at Struggling Portsmouth, but it was not to be—a controversial penalty robbing the team of a vital point.

It was a pity that spot kick decision went against the Saddlers at Fratton Park. Without looking particularly impressive, they had still looked capable of beating a very mediocre side Pompey once Alan Buckley had given them the lead.

But it was another point dropped—on a day when all three clubs at the top of the Third Division table were beaten.

Brighton, despite their 3-0 defeat at Bury, stayed top a point ahead of Wrex-



# golden goal

Two times printed on each ticket from 1.00 min. to 45.00 mins. and 46.00 mins. to 89.59 secs.

## FIRST PRIZE £25

for correct time of first goal scored in today's match.

(Prize money shared if more than one winner)

## SECOND PRIZE £10

for correct time of second goal scored in today's match.

(Prize money shared if more than one winner)

## TWO FREE STAND TICKETS

for the next home league game for the correct time of each further goal.

## YOUR GOAL TIMES

32 56

58 38

## RULES

The times of the goals will be recorded by the official timekeeper, appointed by the promoter, whose decision will be final.

Torn or defaced times are not acceptable.

Prizes paid only to holders of winning times.

In any dispute the promoter's decision is final.

Claims should be produced after the match to the Hillary Street offices, or by no later than seven days from date of match.

Should no goals be scored the first prize will be paid to holder of time 89 mins. 59 secs.

## CLAIMS

When claiming, the complete programme should be produced and name and address clearly printed in space provided.

**WALSALL v SWINDON TOWN**

**16th October, 1976**

Name .....

Address .....

Promoter: H. J. Westmancoat.  
Registered under Lotteries Act, 1975.

# Dimension

nam, one of my earlier tips for promotion, who had an easy 3-0 home success over Lincoln. Shrewsbury, however, were a bit unlucky to lose at Swindon, where a goal from home captain, Colin Prohett settled the issue a couple of minutes from time.

Reading also lost ground among the pace-setters when going down 4-0 at Chesterfield to give former Walsall trainer, Arthur Cox, immediate success on taking over the managerial chair at Saltergate.

The Saddlers are now seven points behind leaders Brighton—and that's a lot of leeway to make up if the team are to overcome their bad start and begin to make a challenge.

However, things are not as bad as when I con-

tributed this column a month ago. Then Walsall were bottom of the table.

The team can play a lot better than they have been doing. Everyone knows that and no one will be satisfied until they do strike top form.

The tide will turn soon, I'm convinced of that. Until it does the fans can play their part by getting behind the players as Atthey suggests.

I have always felt Walsall supporters could encourage their team far more than they do. So let's hear all of you this afternoon.

And I hope you have plenty to send you home happy, even if you do go away with sore throats!

Trevor Gedge  
of the *Express & Star*



deeley's

(castings) Ltd



**LEAMORE  
LANE  
LEAMORE  
WALSALL  
WS2 7BY  
STAFFS.**

**Manufacturers of  
GREY IRON and  
MALLEABLE  
IRON CASTINGS**

**We can produce for  
you high volume  
requirements or one  
off specials.**

**LET US GIVE YOU A  
QUOTATION FOR  
ALL YOUR IRON  
CASTINGS FROM A  
FEW OUNCES TO  
200 lbs.**

**Telephone:  
BLOXWICH  
76898/9  
or 76102**



**ELECTRICAL  
RETAILERS**

**COMBUSTION  
MAINTENANCE  
ENGINEERS**

**ELECTRICAL  
CONTRACTORS**



**4 HAWES CLOSE  
WALSALL WS1 3HG**

*Telephone:*

**6 1 1 8 2 5**

**&**

**6 1 1 8 5 1**

**MATCH BALL  
DONATED TODAY  
MIDLAND PROMOTIONS  
Commercial Consultants  
to Walsall F.C.**

**CALL AT OUR SHOWROOM  
See our Complete Range  
of Light Fittings**

**MASON STYLE ELECTRICS**

### **LEAGUE DIVISION THREE**

This was a match Walsall desperately needed to win away from the depths of the third division. Walsall determined and skilful side and did not have to wait long for a hit shot from Nick Atthey. Walsall continued to dominate when Colin Harrison added a second. Starting the second half the Saddlers always looked likely to score again and it was who was on hand to head home a cross from Harrison late in the game but never looked like taking away all the action shows two raids on the Vale goal, both involving Bernie forcing his way through the defence for a goal on hand together with Alan Buckley should the goalkeepers



Phot

**PRIVILEGE TICKET  
VOUCHER No. 6**



# GOODFELLOWS GARAGE LTD.

60-73 PADDOCK LANE, WALSALL  
**CHRYSLER Main Dealer**

Tel.  
24468

Telephone WALSALL 24468  
 for

- ★ SALES & SERVICE
- ★ BODY REPAIRS
- ★ CHRYSLER PARTS
- ★ SELF DRIVE HIRE  
 including  
 12-seater  
 Mini  
 Buses

**MATCH BALL  
 NATED TODAY BY  
 LAND PROMOTIONS  
 Commercial Consultants  
 to Walsall F.C.**

EE

## WALSALL 3, PORT VALE 1

ely needed to win against a team also striving to get  
 division. Walsall started this match looking the more  
 not have to wait long to open their account, with a well  
 continued to dominate this game and it was no surprise  
 nd. Starting the second half with a two goal lead, the  
 re again and it was the Club's top scorer, Alan Buckley.  
 cross from Harrison. Port Vale got a consolation goal  
 like taking away any points from the Walsall side. Our  
 goal, both involving Bernie Wright. On the left we show  
 defence for a goal attempt and again on the right he is  
 should the goalkeeper make a mistake.

**GOODFELLOWS**

**SUNBEAM**

**HILLMAN**

**Commer**

**SIMCA**

21723  
 Tel.

Photographs by courtesy of Keith Ruston, "Walsall Observer".





**Top of the League  
for Scrap Metal Prices**

# WALSALL METAL CO.

**THE DITCH  
OFF ABLEWELL STREET  
WALSALL**

**TEL: 28293**

NON-FERROUS METALS  
COPPER — BRASS — GUNMETAL  
— LEAD — PHOSPHOR BRONZE —  
ALUMINIUM — TIN — BATTERIES  
— MERCURY — NICKEL, ETC.

## SEVEN DAY SERVICE

Monday to Friday — 8.30 a.m. to 6.00 p.m.  
Saturday — 8.30 a.m. to 4.00 p.m.  
Sunday — 10.00 a.m. to 12.30 p.m.

**In**



**nick**

**FULL NAME**  
Nicholas Atthey  
**BIRTHPLACE**  
Newcastle upon Tyne  
**BIRTHDAY**  
8th May  
**HEIGHT**  
5ft. 7in.  
**WEIGHT**  
11st 7lbs.  
**PREVIOUS CLUBS**  
None  
**FAVOURITE PLAYER**  
Norman Hunter  
**FAVOURITE OTHER TEAM**  
Newcastle United  
**CAR**  
Avenger Estate  
**BIGGEST DISAPPOINTMENT**  
Defeat at the hands of Birmingham City in the 5th round of the F.A. Cup 1974/75.



# Introducing

In recent years injury has dogged the career of Nick Atthey, Walsall's longest-serving player, but with typical Geordie determination he has fought his way back to peak fitness on each occasion to regain a regular first team spot.

With over 400 first team league appearances behind him, either sweeping up in defence or in his present rôle as a mid-field man, Atthey is the type of player who is always guaranteed to give 100 per cent effort.

Of the present playing staff only full back Colin Harrison comes anywhere near Atthey for length of service, having arrived at Fellows Park just a few months after Nick. The loyalty of the two Walsall stalwarts has been recognised by the club staging testimonial matches for both of them.

Unlike Harrison, however, Nick Atthey has had to overcome two cartilage operations in the space of four months and then he was out for almost two-thirds of last season with ankle trouble, which was finally cured by an operation for the removal of a piece of floating bone.

At 30, Atthey is coming towards the end of his playing days but he has always kept himself in top physical condition and is confident he can continue playing for at least a couple more seasons.

Like everyone else at Fellows Park he is concerned at the club's poor start to the new campaign. "I think it is a lack of understanding between the players and we have got to work at it to try and sort things out," he said.

"All teams have had a bad patch at some stage or other but if we can string together three or four good results we'll turn the corner and still do well," added Atthey.

While Nick praises the faithful Saddlers' followers, he also feels the crowd could help the team more.

"A supporter pays his money to come in so he is entitled to give us some stick when things are going badly, but we all know when things are not going right without being reminded about it.

"I'd like the crowd to get behind us a bit more, especially when things are not going too well," Atthey told me.

Nick Atthey knows only too well what helps motivate the team. So let's hope all supporters take note.

(By TREVOR GEDGE  
of the *Express & Star*)

# Atthey

BIGGEST THRILL  
MOST MEMORABLE MATCH  
FAVOURITE FOOD  
FAVOURITE T.V. PROGRAMME  
FAVOURITE SINGERS  
FAVOURITE ACTOR  
FAVOURITE ACTRESS  
BEST FRIENDS  
PETS  
BIGGEST INFLUENCE  
HOBBIES  
WHO WOULD YOU MOST LIKE TO BE  
WHO WOULD YOU MOST LIKE TO MEET  
AMBITION  
LIKES  
DISLIKES  
MOST DIFFICULT OPPONENT  
JOINED WALSTALL  
DEBUT

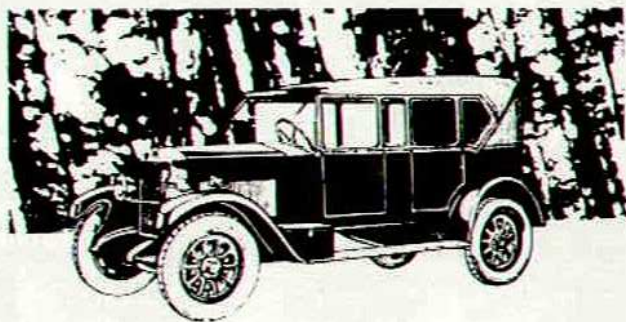
Birth of my daughter.  
My testimonial game against Leeds United.  
Roast Beel and Yorkshire Pudding.  
All documentaries.  
Shirley Bassey and Frank Sinatra.  
Richard Burton.  
Elizabeth Taylor.  
People I have known for years.  
An alsatian dog called Bruce.  
Bill Moore. Ron Dukes and Ray Shaw.  
Walking and Golf.  
Gary Player.  
No one in particular.  
To live long and enjoy life.  
A good night out.  
Unfair criticism.  
Peter Dohing ex Stoke City forward.  
31st July, 1961. Turned professional 2nd July, 1963.  
1st May, 1964, at Q.P.R.



## CAR INSURANCE

For entirely reliable Insurance advice contact Rowlands of Walsall for you and your car's sake.

**J. E. ROWLAND & Co.**  
5 BRIDGE STREET, WALSALL WS1 1DT  
Telephone: Walsall 25454/5



*Associated Insurance Brokers*

# Golden Goal Winners

### **WALSALL v SHREWSBURY TOWN** 18th August, 1976

Goals Scored: One.

Goaltimes: 1, 65mins 46secs.

Winners:

£25. Mr. K. M. Smith, 11 Burrows Croft, Bilston.

### **WALSALL v GILLINGHAM** 28th August, 1976

Goals Scored: Three.

Goaltimes: 1, 9min 23secs; 2, 25mins 14secs;  
3, 80mins 14secs.

Winners:

£25. Mr. John Wardle, 22 Westbury Road, Wednesbury.

£10. Mr. J. Williams, 18 Bridge Road, Shelfield.

### **WALSALL v NOTTM. FOREST** 31st August, 1976

Goals Scored: Six.

Goaltimes: 1, 17mins 56secs; 2, 24mins 32secs;  
3, 41mins 39secs; 4, 62mins 02secs;  
5, 80mins 02secs; 6, 85mins 40secs

Winners:

£25. Mr. Philip Tapper, 218 Sutton Road, Walsall.

Two Match Tickets. Mr. P. J. Morton, 27 Marine Crescent, Wordsley.

### **WALSALL v LINCOLN CITY** 14th September, 1976

Goals Scored: Four.

Goaltimes: 1, 5mins 5secs; 2, 28mins 4secs;  
3, 49mins 15secs; 4, 59mins 45secs.

Winners:

No claims received.

### **WALSALL v PORT VALE** 3rd October, 1976

Goals Scored: Four.

Goaltimes: 1, 9mins 23secs; 2, 38mins 45secs;  
3, 71min 01secs; 4, 76mins 40secs.

Winners:

£25. Mr. Harper, 37 Delves Road, Walsall.

£10. Mr. A. Mason, 184 West Bromwich Road, Walsall.

Two Match Tickets. A. Manig, 63 Edinburgh Drive, Rushall.

Ian Hunt, 29 Dingle View, Sandyfields, Sedgley.

*Engineers - Toolmakers and All Tool Users should remember these six good reasons why you should deal with*

**ARTHUR FOXALL (TOOLS) LTD.**  
**BLUE LANE WEST, WALSALL**

Telephone: Walsall 27584/5

**F**OREMOST FOR QUALITY  
**O**RDERS PROMPTLY EXECUTED  
**X**CELLENT DELIVERIES  
**A**LWAYS AT YOUR SERVICE  
**L**ARGE STOCKS  
**L**OWEST POSSIBLE PRICES



# A Stainless Reputation

**TI CHESTERFIELD**

A member of the world-wide  
**STEEL TUBE DIVISION**



TI Chesterfield Ltd., Stainless Steel Division,  
Green Lane, Walsall. Tel: Walsall 21222.

The skills, the enthusiasm, the will to succeed, the ability to take on all comers and to come up with the winning touch is part of the Walsall tradition.

Like any successful club we depend on the teamwork and dedication of our workforce and staff to ensure we can meet and beat the competition whoever they are.

We've come a long way since our early days here in Walsall when we first started producing stainless tube under the Talbot Stead colours.

Right now we're building a reputation in the first division of international companies supplying top quality products for use throughout the world.

## HOME & AWAY

**WEST MIDLAND (REGIONAL) LEAGUE  
PREMIER DIVISION  
SATURDAY, OCTOBER 23rd**

**DARLASTON**

**FOOTBALL LEAGUE  
DIVISION THREE  
SATURDAY, OCTOBER 30th**

**CRYSTAL PALACE**

Kick-off 3.00 p.m.

**TUESDAY, NOVEMBER 2nd**

**OXFORD UNITED**

Kick-off 7.30 p.m.

**Saturday, October 23rd**

**CHESTERFIELD** Kick-off 3.00 pm

ADMISSION AT TURNSTILES FOR CENTRE  
AND WING STANDS:

CENTRE ... £1.00 WING ... 85p

If you are travelling by car to this match the Automobile Association recommends the following route:

Follow signs Lichfield A461. In 6 miles take 4th exit at roundabout A5 signposted Nuneaton. 2¼ miles on at roundabout take 2nd exit A5148 signposted Burton A38. Join A38. Then follow signs Burton and Derby A38. At Derby take ring road, follow signs A61 Chesterfield, Ripley. Continue through Ripley and Alfreton. On outskirts of town take Baden Powell Road into Boythorpe Avenue. Turn right into Bolthorpe Road. Continue over island and football ground is almost opposite at next T junction.

The supporters club coach will be leaving Walsall at 11.30. Fare is 85p. Bookings can be made at the kiosk at the Hillary Street end of the ground or by contacting the Supporters Club in Wallows Lane.

Terrace supporters are advised to go to the Cross Street end of the ground.

**AA**

**TUBE MANIPULATIONS — FABRICATIONS  
SPECIALISED HEAT TREATMENT**

**R. W. McClaughlin Tubefabs Limited**

ATLAS WORKS

HATHERTON STREET

WALSALL

Telephone: Walsall 25133/4



# matchfacts

## FOOTBALL LEAGUE DIVISION THREE

DATE	OPPONENTS	F.	A.	ATT.	PTS.	POS.
<b>1976</b>						
Mon. Aug. 16	Shrewsbury Town (LC 1) ...	1	0	5,553	—	—
Wed. Aug. 18	<b>SHREWSBURY TOWN (LC 1)</b> ...	1	0	6,748	—	—
Sat. Aug. 21	Sheffield Wednesday ...	0	0	12,046	1	—
Sat. Aug. 28	<b>GILLINGHAM</b> ...	1	2	5,787	1	18
Tues. Aug. 31	<b>NOTTINGHAM FOREST (LC 2)</b> ...	2	4	8,437	—	—
Sat. Sept. 4	Reading ...	1	2	6,038	1	22
Sat. Sept. 11	<b>SHREWSBURY TOWN</b> ...	3	3	5,320	2	24
Tues. Sept. 14	<b>LINCOLN CITY</b> ...	1	3	5,356	—	24
Sat. Sept. 18	Wrexham ...	0	1	5,923	—	24
Sat. Sept. 25	Northampton Town ...	1	0	5,656	2	20
Sat. Oct. 2	<b>PORT VALE</b> ...	3	1	5,459	2	17
Tues. Oct. 5	Brighton ...	0	7	14,204	—	20
Sat. Oct. 9	Portsmouth ...	1	1	7,779	1	19
Sat. Oct. 16	<b>SWINDON TOWN</b> ...					
Sat. Oct. 23	Chesterfield ...					
Sat. Oct. 30	<b>CRYSTAL PALACE</b> ...					
Tues. Nov. 2	<b>OXFORD UNITED</b> ...					
Sat. Nov. 6	Chester ...					
Sat. Nov. 13	<b>YORK CITY</b> ...					
Sat. Nov. 20	F.A. Cup (1) ...					
Sat. Nov. 27	Rotherham United ...					
Wed. Dec. 1	League Cup (5) ...					
Fri. Dec. 3	<b>PETERBOROUGH UNITED</b> ...					
Sat. Dec. 11	F.A. Cup (2) ...					
Sat. Dec. 18	Bury ...					
Mon. Dec. 27	<b>PRESTON N.E.</b> ...					
Tues. Dec. 28	Tranmere Rovers (7.30 p.m.) ...					
<b>1977</b>						
Sat. Jan. 1	<b>CHESTER</b> ...					
Mon. Jan. 3	Crystal Palace ...					
Sat. Jan. 8	<b>GRIMSBY TOWN (3)</b> ...					
Sat. Jan. 15	Lincoln City ...					
Wed. Jan. 19	League Cup SF ...					
Sat. Jan. 22	<b>SHEFFIELD WEDNESDAY</b> ...					
Sat. Jan. 29	Mansfield Town (4) ...					
Sat. Feb. 5	Gillingham ...					
Sat. Feb. 12	<b>READING</b> ...					
Wed. Feb. 16	League Cup SF ...					
Sat. Feb. 19	Shrewsbury Town ...					
Fri. Feb. 25	<b>WREXHAM (5)</b> ...					
Sat. Mar. 5	<b>NORTHAMPTON TOWN</b> ...					
Fri. Mar. 11	Port Vale ...					
Sat. Mar. 12	League Cup Final ...					
Sat. Mar. 19	<b>PORTSMOUTH (6)</b> ...					
Sat. Mar. 26	Swindon Town ...					
Sat. Apr. 2	<b>CHESTERFIELD</b> ...					
Sat. Apr. 9	<b>TRANMERE ROVERS</b> ...					
Mon. Apr. 11	Preston N.E. (11.30 a.m.) ...					
Tues. Apr. 12	Oxford United ...					
Sat. Apr. 16	<b>BRIGHTON</b> ...					
Tues. Apr. 19	<b>MANSFIELD TOWN</b> ...					
Sat. Apr. 23	York City SF ...					
Sat. Apr. 30	<b>ROTHERHAM UNITED</b> ...					
Tues. May 3	Grimsby Town ...					
Sat. May 7	Peterborough ...					
Sat. May 14	<b>BURY</b> ...					
Sat. May 21	F.A. Cup Final ...					

Home Fixtures Bold

## L. & J. LONSDALE METAL MERCHANTS Limited

154 UPPER GREEN LANE, WALSALL WS2 8LE

Telephone  
the  
Specialists



Walsall  
21890  
or  
25759

SKIP HIRE — LEAD — BATTERIES

RAGS & WOOLS

IRON — COPPER — BRASS — ALUMINIUM

and other ferrous and non-ferrous metals



# APPEARANCES AND SCORERS

NAME	LEAGUE	CUP	GOALS
G. Andrews	6	1	—
N. Atthey	9	3	2
M. Bates	7	3	—
A. Birch	2	—	—
A. Buckley	10	3	8
B. Caswell	6	1	—
M. Dennehy	10	3	1
A. Evans	8	—	—
R. Fry	5	3	—
C. Harrison	10	3	1
R. Hynd	9	3	—
M. Kearns	10	3	—
D. Robinson	8	1	—
D. Serella	5	3	—
B. Taylor	2	2	—
B. Wright	8	3	2
Own Goals			1

# LEAGUE DIVISION THREE

	P.	W.	D.	L.	F.	A.	Pts.
Brighton	10	6	2	2	26	13	14
Wrexham	9	6	1	2	19	7	13
Shrewsbury	9	5	2	2	19	10	12
Rotherham	9	4	4	1	15	8	12
Sheffield Wed.	10	4	4	2	17	13	12
Reading	10	5	2	3	16	14	12
<b>SWINDON</b>	<b>10</b>	<b>5</b>	<b>2</b>	<b>3</b>	<b>15</b>	<b>13</b>	<b>12</b>
Mansfield	9	5	1	3	17	9	11
Crystal Palace	9	4	3	2	10	7	11
Bury	9	5	1	3	16	14	11
Gillingham	9	4	3	2	15	15	11
Lincoln	9	3	4	2	12	9	10
Peterborough	11	4	2	5	12	17	10
Preston	9	2	5	2	12	9	9
Chester	10	3	3	4	7	12	9
Oxford United	9	2	4	3	17	17	8
Chesterfield	10	3	2	5	12	18	8
Tranmere	9	2	3	4	7	9	7
<b>WALSALL</b>	<b>10</b>	<b>2</b>	<b>3</b>	<b>5</b>	<b>11</b>	<b>20</b>	<b>7</b>
Grimsby	9	2	2	5	9	16	6
Port Vale	10	2	2	6	9	17	6
York	9	2	2	5	10	20	6
Portsmouth	9	1	3	5	7	15	5
Northampton	9	1	2	6	5	13	4

# WEST MIDLAND LEAGUE (REGIONAL) PREMIER DIVISION

DATE	OPPONENTS	F.	A.	POS.
1976				
Sat. Aug. 21	BRERETON SOCIAL	0	3	—
Tues. Aug. 24	Gornal	0	3	—
Tues. Aug. 31	Eastwood	0	4	—
Sat. Sept. 4	BRIERLEY HILL	3	0	—
Tues. Sept. 7	BILSTON	2	2	—
Sat. Sept. 11	Dudley Town	2	3	20
Sat. Sept. 25	HALESOWEN	4	0	14
Wed. Sept. 29	COVENTRY SPORTING (Cup)	3	1	—
Sat. Oct. 2	Lye Town	0	3	14
Sat. Oct. 9	Warley C.B.	0	3	14
Sat. Oct. 16	V.S. Rugby			
Sat. Nov. 6	WARLEY C.B.			
Sat. Nov. 13	Willenhall Town			
Sat. Nov. 27	ALVECHURCH			
Sat. Dec. 4	Bilston			
Sat. Dec. 11	LYE TOWN			
Sat. Dec. 18	EASTWOOD			
Sat. Jan. 1	Hednesford			
Sat. Jan. 8	Hinckley Athletic			
Sat. Jan. 15	HINCKLEY ATHLETIC			
Sat. Jan. 22	Brereton Social			
Sat. Jan. 29	GORNAL			
Sat. Feb. 5	GRESLEY ROVERS			
Sat. Feb. 12	Brierley Hill			
Sat. Feb. 19	COVENTRY SPORTING			
Sat. Feb. 26	Gresley Rovers			
Sat. Mar. 12	V.S. RUGBY			
Sat. Mar. 19	Halesowen Town			
Sat. Mar. 26	STAFFS. POLICE			
Sat. Apr. 2	Tividale			
Sat. Apr. 9	Warley C.B.			
Sat. Apr. 16	Darlaston			
Sat. Apr. 23	DUDLEY TOWN			
Tues. Apr. 26	HEDNESFORD			
Tues. May 3	ARMITAGE			
Sat. May 7	WILLENHALL TOWN			
Sat. May 14	Alvechurch			
To be arranged				
Coventry Sporting				
Staffs. Police				
Armitage.				
Tividale				
Darlaston				

Home Fixtures Bold

# BRIGHTER FUTURE FOR WALSALL F.C.

WITH NEW FLOODLIGHTS SUPPLIED AND INSTALLED BY



# WEAVER AND BRETTLE

Electrical Contractors

INDUSTRIAL — DOMESTIC — COMMERCIAL — BREAKDOWN SERVICE  
2 NEW STREET, QUARRY BANK  
Tel. Cradley Heath 68191



Polo  
Golf  
Passat  
Scirocco  
Vans  
Caravettes  
Lt. Truck Range

NEW



WALSALL  
MAIN DEALER

**JEM**

USED

Sales  
Service  
Parts  
Accessories  
Body/Paint  
M.O.T.  
Petrol/Oil

# SCORESHEET

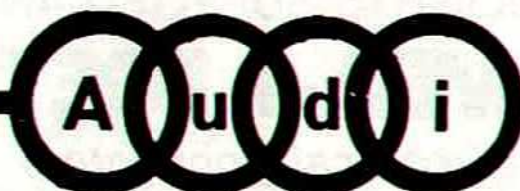
<b>A</b>	BRIGHTON v PETERBOROUGH		<b>L</b>	ARSENAL v STOKE	
<b>B</b>	CHESTER v MANSFIELD		<b>M</b>	BIRMINGHAM v MIDDLESBROUGH	
<b>C</b>	GILLINGHAM v LINCOLN		<b>N</b>	COVENTRY v NEWCASTLE	
<b>D</b>	GRIMSBY v YORK		<b>P</b>	DERBY v TOTTENHAM	
<b>E</b>	OXFORD UTD. v BURY		<b>Q</b>	LIVERPOOL v EVERTON	
<b>F</b>	PORT VALE v WREXHAM		<b>R</b>	SUNDERLAND v ASTON VILLA	
<b>G</b>	PRESTON v CRYSTAL PALACE		<b>S</b>	WEST BROM. v MAN. UNITED	
<b>H</b>	READING v SHEFFIELD WED.		<b>T</b>	HULL v WOLVES	
<b>J</b>	ROTHERHAM v TRANMERE		<b>U</b>	SOUTHAMPTON v HEREFORD	
<b>K</b>	SHREWSBURY v CHESTERFIELD		<b>V</b>	WALSALL RES. v V. S. RUGBY	

Pleck Road

**JEM**  
OF

Wal. 25561 / 2

WALSALL





# **J HODSON & SONS**

**IRON AND STEEL MERCHANTS  
SKIP CONTAINER HIRE  
SCRAP AND FACTORY CLEARANCE**

**BLOXWICH ROAD, WALSALL**

**Telephone: 79490 & 614103**

## **FOLLOW THE SADDLERS**

**IN THE**

**Walsall Observer**



**EVERY FRIDAY**

## **MIDLAND PROMOTIONS**

**MARKETING**

**FUND RAISING**

**COMMERCIAL CONSULTANTS TO WALSALL F.C.  
61 BRADFORD STREET WALSALL      TELEPHONE 30674**





# Bristan Industrial Services Limited

HEAVY INDUSTRIAL CLEANING AND PAINTING CONTRACTORS  
SUPPLIERS OF ALL TYPES OF CLEANING EQUIPMENT AND  
CHEMICALS

ALL EQUIPMENT for SALE, LEASE or HIRE  
For Prompt Sales - Service - Quotations

Contact us at:

BENTLEY MILL CLOSE, WALSALL WS2 0BN

Telephone: Walsall 20941

Telex: 337189

W  
A  
L  
S  
A  
L  
L

White Shirts, with Red Trim Red Shorts, White Socks		Red Shirts, White Shorts, Red Socks
<b>Mick Keams</b>	<b>1</b>	<b>Jim Allan</b>
<b>Roger Hynd</b>	<b>2</b>	<b>John McLaughlin</b>
<b>Colin Harrison</b>	<b>3</b>	<b>Tony Taylor</b>
<b>Dave Robinson</b>	<b>4</b>	<b>Kenny Stroud</b>
<b>Dave Serella</b>	<b>5</b>	<b>Frank Burrows</b>
<b>Nick Atthey</b>	<b>6</b>	<b>Colin Prophet</b>
<b>Miah Dennehy</b>	<b>7</b>	<b>Dave Moss</b>
<b>Alun Evans</b>	<b>8</b>	<b>Gerry O'Brien</b>
<b>Bernie Wright</b>	<b>9</b>	<b>Dave Syrett</b>
<b>Alan Buckley</b>	<b>10</b>	<b>Ray McHale</b>
<b>Brian Caswell</b>	<b>11</b>	<b>Howard Goddard</b>
	<b>12</b>	

REFEREE:  
John W. Gow  
(Swansea)

LINESMEN:  
W. D. Bond (Red Flag)  
M. G. Pulley (Yellow Flag)

S  
W  
I  
N  
D  
O  
N  
  
T  
O  
W  
N

**WALSALL  
PRESSINGS**  
CO. LTD.

For

*Pressings & Fabrications*

WEDNESBURY ROAD  
WALSALL WS1 4JW



Telephone: Walsall 25252/4